



Safeguarding and Child Protection Policy 2020-2021

Named personnel with designated responsibility for Safeguarding:

Academic year	Designated Safeguarding Lead	Deputy Designated Safeguarding Lead	Nominated Safeguarding Governor	Chair of Governors
2020-2021	Mrs E Wise	Mrs K Meeson Mrs N Alexanders	Mrs J Keep	Mrs J Keep
2019-2020	Mrs E Wise	Mrs K Meeson Mrs N Alexanders	Mrs J Keep	Mrs J Keep
2018-2019	Mrs E Wise	Mrs K Meeson Mrs N Alexanders	Mrs J Keep	Mrs J Keep
2017-2018	Mrs E Wise	Mrs C Baines	Mrs J Keep	Mrs J Keep
2016-2017	Mrs E Wise	Mrs C Baines	Mrs J Keep	Mrs J Keep

Policy review dates:

Review Date	Changes made	By whom	Date Shared
September 2020	Updated	Mrs Wise	12 October 2020
March 2020	Updated	Mrs Wise	
September 2019	Updated	Mrs Wise	11 September 2019
March 2019	Updated	Mrs J Keep, Mrs E Wise	12 March 2019
December 2018	Updated	Mrs E Wise	18 December 2018
September 2018	Updated	Mrs J Keep	11 September 2018
Report to the Board		Mrs J Keep	23 March 2018

Contents Page

Section:		
1	Purpose & Aims	
2	School Ethos	
3	Roles and Responsibilities	
4	Training and Induction	
5	Procedures for Managing Concerns	
6	Recording and Information Sharing	
7	Working with Parents and Carers	
8	Child Protection Conferences	
9	Safer Recruitment	
10	Safer Working Practice	
11	Managing Allegations against Staff	
12	Other relevant policies	
13	Statutory Framework	
Appendices:		
A	Suspect child at risk action flow diagram	
B	Safeguarding induction sheet	
C	Abuse and Neglect	
D-L	Specific Safeguarding Issues:	
D1	Child Criminal Exploitation (CCE)	
D2	Child Sexual Exploitation (CSE)	
D3	County Lines	
E	So called 'Honour Based' Violence	
E1	Female Genital Mutilation (FGM)	
E2	Forced Marriage	
F	Preventing Radicalisation	
G	Private Fostering	
H	Children Missing Education (CME)	
I	Peer on Peer abuse	
J	Sexually Harmful Behaviour (sexual violence, harassment, sexting)	
K	Trafficking and Modern Slavery	
L	Domestic Abuse and Homelessness	
M	Key Safeguarding Contacts	
N	Example Cause for concern form / body map	

1. PURPOSE & AIMS

1.1 The purpose of Westfield School's safeguarding policy is to ensure every child who is a registered pupil at our school is safe and protected from harm. This means we will always work to:

- Protect children and young people at our school from maltreatment;
- Prevent impairment of our children's and young people's mental and physical health or development;
- Ensure that children and young people at our school grow up in circumstances consistent with the provision of safe and effective care;
- Undertake that role so as to enable children and young people at our school to have the best outcomes.

1.2 This policy will give clear direction to staff, volunteers, visitors and parents about expected behaviour and our legal responsibility to safeguard and promote the welfare of all children at our school.

1.3 Our school fully recognises the contribution it can make to protect children from harm and supporting and promoting the welfare of all children who are registered pupils at our school. The elements of our policy are prevention, protection and support.

1.4 We recognise that our safeguarding responsibilities are clearly linked to our responsibilities for ensuring that appropriate safeguarding responses are in place for children who are absent from school or who go missing from education, particularly on repeat occasions. The Attendance Lead (Deputy Head) will regularly liaise with the Designated Safeguarding Lead to discuss all persistently absent pupils and those who go missing to identify the risk of abuse and neglect including sexual abuse or exploitation and to ensure that appropriate safeguarding responses have been put in place to reduce the risk of future harm.

1.5 This policy applies to all pupils, staff, parents, governors, volunteers and visitors.

1.6 Prior to implementing this policy we have considered a range of factors to help us identify and focus on the key issues for our school and community. We have reviewed our referrals and considered local context and local issues as well as discussed as a leadership team and with the Governing Body what our key priorities are.

2. OUR ETHOS

2.1 The child's welfare is of paramount importance. Our school will establish and maintain an ethos where pupils feel secure, are encouraged to talk, are listened to and are safe. Children at our school will be able to talk freely to any member of staff at our school if they are worried or concerned about something.

2.2 Everyone who comes into contact with children and their families has a role to play in safeguarding children. We recognise that staff at our school play a particularly important role as they are in a position to identify concerns early and provide help for children to prevent concerns from escalating. **All staff are advised to maintain an attitude of 'it could happen here' where safeguarding is concerned.** When concerned about the welfare of a child, staff members must always act in the **best interests** of the child.

2.3 All staff and regular visitors will, through training and induction, know how to recognise indicators of concern, how to respond to a disclosure from a child and how to record and report this information. We will not make promises to any child and we will not keep secrets. Every child will know what the adult will have to do with any information they have chosen to disclose.

2.4 Throughout our curriculum we will provide activities and opportunities for children to develop the skills they need to identify risks and stay safe. This will also be extended to include material that will encourage our children to develop essential life skills. Safeguarding is explicitly embedded into both our Junior and Senior PSHEE curricula. E-safety is also part of the ICT curriculum, as well as being addressed in assemblies and talks. All girls are encouraged through the above to discuss general issues openly and to bring any personal concerns in confidence to a member of staff.

2.5 At all times we will work in partnership and endeavour to establish effective working relationships with parents, carers and colleagues from other agencies in line with Working Together to Safeguard Children (2018) and Local Safeguarding Board Procedures.

3. ROLES AND RESPONSIBILITIES

Role	Name	Contact Details
Designated Safeguarding Lead (DSL)	Mrs E Wise, Assistant Head	lwise@westfield.newcastle.sch.uk 0191 255 3980
Deputy DSL	Mrs K Meeson Mrs N Alexanders Mr G Hallam (NSB)	kmeeson@westfield.newcastle.sch.uk nalexanders@westfield.newcastle.sch.uk 0191 255 3980 ghallam@newcastleschool.co.uk 0191 255 9300
Headmaster	Mr N Walker	nwalker@westfield.newcastle.sch.uk 0191 255 3980
Named Safeguarding Governor	Mrs J Keep	janikeep@gmail.com 0191 255 3980
Chair of Governors	Mrs J Keep	janikeep@gmail.com 0191 255 3980

3.1 It is the responsibility of *every* member of staff, volunteer and regular visitor to our school to ensure that they carry out the requirements of this policy and, at all times, work in a way that will safeguard and promote the welfare of all of the pupils at this school. This includes the responsibility to provide a safe environment in which children can learn.

The Governing Body

3.2 The Governing Body of Westfield School is accountable for ensuring the effectiveness of this policy and our compliance with it. Although our Governing Body takes collective responsibility to safeguard and promote the welfare of our pupils, we also have a named governor who champions safeguarding within the school.

3.3 The Governing Body will ensure that:

- The safeguarding policy is in place and is reviewed annually, is available publicly via our school website and has been written in line with Local Authority guidance and the requirements of the Local Safeguarding Partners' (formerly LSCB) policies and procedures;

- The school contributes to inter-agency working in line with Working Together to Safeguard Children (2018);
- A senior member of staff from the leadership team is designated to take the lead responsibility for safeguarding and child protection and that there is a deputy DSL(s) who is appropriately trained to deal with any issues in the absence of the Designated Safeguarding Lead (DSL). There will always be cover for this role;
- All staff receive a safeguarding induction and are provided with a copy of this policy and the staff code of conduct;
- All staff undertake appropriate child protection training that is updated regularly, at least annually.
- Procedures are in place for dealing with allegations against members of staff and volunteers in line with statutory guidance;
- Safer recruitment practices are followed in accordance with the requirements of [‘Keeping Children Safe in Education’](#) (KCSIE) DfE (Sept, 2020);
- They remedy without delay any weakness in regard to our safeguarding arrangements that are brought to their attention.

3.4 The governing body will receive an annual safeguarding report that will record the training that has taken place, the number of staff attending and any outstanding training requirements for the school. It will also record all safeguarding activity and will inform the governing body how the school meets its statutory requirements.

The governing body will also undertake a range of ‘safeguarding visits’ over the year to monitor compliance within the safeguarding agenda.

The Headmaster

3.5 At Westfield School the Headmaster is responsible for:

- Identifying a senior member of staff from the leadership team to be the Designated Safeguarding Lead (DSL);
- Identifying alternative members of staff to act as the Designated Safeguarding Lead (DSL) in their absence to ensure there is always cover for the role;
- Ensuring that the policies and procedures adopted by the governing body, particularly concerning referrals of cases of suspected abuse and neglect, are followed by all staff;
- Ensuring that all staff and volunteers feel able to raise concerns about poor or unsafe practice and such concerns are addressed sensitively in accordance with agreed whistle-blowing procedures;
- Liaising with the Local Authority Designated Officer (LADO) in the event of an allegation of abuse being made against a member of staff.

The Designated Safeguarding Lead (DSL)

3.6 The Designated Safeguarding Lead is a senior member of staff, from the leadership team who takes lead responsibility for safeguarding and child protection within our school. The DSL will carry out their role in accordance with the responsibilities outlined in Annex B of *‘Keeping Children Safe in Education’* DfE (Sept, 2020);

3.7 The DSL will provide advice and support to other staff on child welfare and child protection matters. Any concern for a child’s safety or welfare will be recorded on CPOMS, which will alert the DSL (or in writing and given to the DSL).

3.8 During term time the designated safeguarding lead and or a deputy will always be available (during school or college hours) for staff in the school or college to discuss any safeguarding concerns. If in *exceptional* circumstances, a DSL is not available on the school site in person, we will ensure that they are available via telephone and any other relevant media. The DSLs will also provide holiday cover on a rota, in case of emergency.

3.9 The DSL will manage referrals and will refer cases of suspected abuse to children's social care, refer cases to the Channel programme if there is a radicalisation concern, refer relevant cases to the Disclosure and Barring Service, and to the Police where a crime has been committed.

3.10 The DSL will liaise with the three safeguarding partners and other agencies where necessary. Through regular training, knowledge and experience the DSL will be equipped to attend and contribute to child protection case conferences, strategy discussions and other interagency meetings.

3.11 The DSL will maintain detailed and accurate written records and child protection files ensuring that they are kept confidential and stored securely.

3.12 The DSL is responsible for ensuring that all staff members and volunteers are aware of our policy and the procedure they need to follow. They will ensure that all staff, volunteers and regular visitors have received appropriate child protection information during induction.

3.13 The DSL will help promote educational outcomes by sharing information about the issues that children, including children with a social worker, are experiencing, or have experienced, with teachers and leadership staff.

4. TRAINING & INDUCTION

4.1 When new staff join our school they will be informed of the safeguarding arrangements in place, including the recording and reporting procedures.

They will receive safeguarding training during their induction period within the first half term of joining the school. This programme will include information relating to signs and symptoms of abuse, how to manage a disclosure from a child, how to record concerns and the role of the Designated Safeguarding Lead (DSL). The training will also include information about whistle-blowing in respect of concerns about another adult's behaviour and suitability to work with children.

4.2 In addition to the safeguarding induction, we will ensure that mechanisms are in place to assist staff to understand and discharge their role and responsibilities as set out in Part one of '*Keeping Children Safe in Education*' DfE (Sept, 2020); In order to achieve this, we will ensure that:

- all members of staff will undertake appropriate safeguarding training on an annual basis.
- we will evaluate the impact of this training;
- all staff members receive regular safeguarding and child protection updates (for example, via email, staff meetings, best practice sessions, talks by outside speakers, attendance at relevant courses), as required, but at least annually, to provide them with the relevant skills and knowledge to safeguard children effectively;

4.3 All regular visitors, temporary staff and volunteers to our school will be given a set of our safeguarding procedures; they will be informed of who our DSL and alternative staff members are and what the recording and reporting system is. (See Appendix B).

4.4 The DSL, the alternative designated member of staff and any other senior member of staff who may be in a position of making referrals or attending child protection conferences or core groups will attend appropriate training. In addition to formal training, DSL will ensure that they update their knowledge and skills at regular intervals, but at least annually, to keep up with any developments relevant to their role.

4.5 Our governing body will also undertake appropriate training to ensure they are able to carry out their duty to safeguard all of the children at our school.

4.6 We actively encourage all of our staff to keep up to date with the most recent local and national safeguarding advice and guidance, Annex A of '*Keeping Children Safe in Education*' (Sept, 2020) provides links to guidance on specific safeguarding issues such as Child Sexual Exploitation and Female Genital Mutilation. In addition, throughout the school year we will brief staff on key issues identified within Keeping Children Safe 2020.

4.7 All staff are expected to read these key documents and fully **understand** their responsibility.

1. Part One and Annex A of '*Keeping Children Safe in Education*' DfE (2020);
2. Safeguarding / Child Protection Policy
3. Behaviour Policy
4. Staff Code of Conduct
5. Whistleblowing policy
6. Safeguarding responses to children who go missing from education
7. Role of the Designated Safeguarding Lead (including the identity of the DSL and any deputies).

5. PROCEDURES FOR MANAGING CONCERNS

5.1 All staff must report any concerns that they have and not see these as insignificant. Staff should **not** assume a colleague or another professional will take action and share the concern.

On occasions, a referral is justified by a single incident such as an injury or disclosure of abuse. More often however, concerns accumulate over a period of time and are evidenced by building up a picture of harm over time; this is particularly true in cases of emotional abuse and neglect. In these circumstances, it is crucial that staff record and pass on concerns in accordance with this policy to allow the DSL to build up a picture and access support for the child at the earliest opportunity. A reliance on memory without accurate and contemporaneous records of concern could lead to a failure to protect.

Staff must immediately report:

- any suspicion that a child is injured, marked, or bruised in a way which is not readily attributable to the normal knocks or scrapes received in play
- any explanation given which appears inconsistent or suspicious
- any behaviours which give rise to suspicions that a child may have suffered harm (e.g. worrying drawings or play)
- any concerns that a child may be suffering from inadequate care, ill treatment, or emotional maltreatment
- any concerns that a child is presenting signs or symptoms of abuse or neglect

- any significant changes in a child's presentation, including non-attendance
- any hint or disclosure of abuse from any person
- any concerns regarding person(s) who may pose a risk to children (e.g. living in a household with children present)

Staff must also consider children who might present as vulnerable. (see appendix C)

5.2 Responding to Disclosure

Disclosures or information may be received from pupils, parents or other members of the public. At Westfield we recognise that those who disclose such information may do so with difficulty, having chosen carefully to whom they will speak. Accordingly all staff will handle disclosures with sensitivity. Such information cannot remain confidential and staff will immediately communicate what they have been told to the Designated Safeguarding Lead.

Staff will not investigate but will, wherever possible, elicit enough information to pass on to the Designated Safeguarding Lead in order that she can make an informed decision of what to do next.

Staff will:

- listen to and take seriously any disclosure or information that a child may be at risk of harm
- try to ensure that the person disclosing does not have to speak to another member of school staff
- clarify the information
- try to keep questions to a minimum and of an 'open' nature e.g. 'Can you tell me what happened?' rather than 'Did x hit you?'
- try not to show signs of shock, horror or surprise
- not express feelings or judgments regarding any person alleged to have harmed the child
- explain sensitively to the person that they have a responsibility to refer the information to the senior designated person
- reassure and support the person as far as possible
- explain that only those who 'need to know' will be told
- explain what will happen next and that the person will be involved as appropriate
- complete a cause for concern form (Appendix M)

5.3 The Designated Safeguarding Lead (DSL) should be used as a first point of contact for concerns and queries regarding any safeguarding concern in our school. Any member of staff or visitor to the school who receives a disclosure of abuse or suspects that a child is at risk of harm must report it immediately to the DSL or, if unavailable, to the alternative designated person. In the absence of either of the above, the matter should be brought to the attention of the most senior member of staff. In the case of a student from Newcastle School for Boys, the first point of contact should be Mr Hallam, their DSL.

5.4 All concerns about a child or young person should be reported without delay and recorded in writing using the agreed procedures on CPOMS or by completing a cause for concern form: See appendix M). If in doubt about recording requirements, staff should discuss this with the Designated Safeguarding Lead.

5.5 Following receipt of any information raising concern, the DSL will consider what action to take and seek advice from Children's Services as required. All information and actions taken, including the reasons for any decisions made, will be fully documented.

5.6 It is *not* the responsibility of school staff to investigate welfare concerns or determine the truth of any disclosure or allegation. All staff, however, have a duty to recognise concerns and pass the information on in accordance with these procedures.

5.7 All referrals will be made in line with Local Children's Services procedures.

5.8 The school adheres to child protection procedures that have been agreed locally through the Local Safeguarding Partners. Where we identify children and families in need of support, we will carry out our responsibilities in accordance with local threshold guidance.

5.9 If, at any point, there is a **risk of immediate serious harm** to a child a referral should be made to Children's Services **immediately**. Anybody can make a referral. If the child's situation does not appear to be improving the staff member with concerns should press for re-consideration by raising concerns again with the DSL and/or the Headmaster. Concerns should always lead to help for the child at some point.

5.10 Staff should always follow the reporting procedures outlined in this policy in the first instance. However, they may also share information directly with Children's Services, or the police if:

- the situation is an emergency and the Designated Safeguarding Lead, their alternative and the Headmaster are all unavailable;
- they are convinced that a direct report is the only way to ensure the pupil's safety.

5.11 Any member of staff who does not feel that concerns about a child have been responded to appropriately and in accordance with the procedures outlined in this policy should raise their concerns with the Headmaster or the Chair of Governors. If any member of staff does not feel the situation has been addressed appropriately at this point should contact Children's Services directly with their concerns.

Early Help:

5.12 If early help is appropriate, the Designated Safeguarding Lead (or deputy) will generally lead on liaising with other agencies and setting up an inter-agency assessment, as appropriate.

Staff may be required to support other agencies and professionals in an early help assessment and, in some cases, where education is the fundamental factor, acting as the lead practitioner.

Early help assessments should be kept under review and referred to social care for assessment if the child's situation does not appear to be improving or is getting worse.

Vulnerability

Staff should consider children who may be particularly vulnerable to abuse and may require early help.

Factors that can increase vulnerabilities can include:

- any children with additional needs including children with Special Educational Needs / Disabled children (SEND)
- children facing housing issues such as frequent moves and homelessness
- those living in families with chaotic lifestyles
- families with increased stress, parental mental health and/or drug and alcohol dependency

- those children living elsewhere, with friends, relatives, are in care or are leaving care
- Asylum Seekers / Refugees
- those vulnerable to discrimination on the basis of their sexuality, race, religion, ethnicity or disability
- children at risk from neglect or abuse including specific issues such as FGM, CSE, forced marriage, radicalisation and living in households with domestic abuse
- children with communication difficulties
- children without adequate parenting / supervision which could lead to abuse, risk-related behaviour and sexual exploitation.

This is not an exhaustive list but merely an example of vulnerabilities that staff must consider when identifying safeguarding concerns

6. RECORDS AND INFORMATION SHARING

6.1 If staff are concerned about the welfare or safety of any child at our school, they will log information on the school's CPOMS system or record their concern on the agreed reporting form (Appendix M), which should be signed and dated. Any concerns should be passed to the DSL **without delay**

6.2 All information recorded or received (such as Child protection information) will be kept, as far as possible, electronically on CPOMS, which is set to limit access to DSLs and the Headmaster. In the case of paper records, they will be stored in an individual file in the secure cabinet in the locked cupboard on the landing.

Paper records of concern, copies of referrals, invitations to child protection conferences, core groups and reports will be stored here. All child protection files will include a chronology, a contents front cover and will record significant events in the child's life.

6.3 Child protection files will be the responsibility of the DSL. Child protection information will only be shared with relevant staff / agencies on a 'need to know' basis in the child's interests and on the understanding that it remains strictly confidential.

6.4 When a child leaves our school, the DSL will make contact with the DSL at the new school and will ensure that the child protection file is forwarded to the receiving school in an appropriately agreed secure manner, where appropriate in the form of electronic records via CPOMS audit features. We will retain evidence to demonstrate we have acted accordingly when dealing with safeguarding matters and how the file has been transferred; this may be in the form of a written confirmation of receipt from the receiving school and/or evidence of recorded delivery.

Where a parent elects to remove their child from the school roll to home educate, the school will make arrangements to pass any safeguarding concerns to the Local Authority. All the above complies with GDPR 2018 guidelines (see our Data Protection Policy).

7. WORKING WITH PARENTS & CARERS

7.1 Westfield School is committed to working in partnership with parents/carers to safeguard and promote the welfare of children and to support them to understand our statutory responsibilities in this area.

7.2 When new pupils join our school, parents and carers will be informed that we have a safeguarding policy. A copy will be provided to parents on request and is available on the school website. Parents and carers will be informed of our legal duty to assist our colleagues in other agencies with child protection enquiries and what happens should we have cause to make a referral to Children's Services.

7.3 We are committed to working with parents positively, openly and honestly. We ensure that all parents are treated with respect, dignity and courtesy. We respect parents' rights to privacy and confidentiality and will not share sensitive information unless we have permission or it is necessary to do so in order to safeguard a child from harm.

7.4 We will seek to share with parents any concerns we may have about their child *unless* to do so may place a child at increased risk of harm. A lack of parental engagement or agreement regarding the concerns the school has about a child will not prevent the DSL making a referral to Children's Services in those circumstances where it is appropriate to do so.

7.5 In order to keep children safe and provide appropriate care for them, the school requires parents to provide accurate and up to date information regarding:

- Full names and contact details of all adults with whom the child normally lives;
- Full names and contact details of all persons with parental responsibility (if different from above);
- Emergency contact details (if different from above);
- Full details of any other adult authorised by the parent to collect the child from school (if different from the above).

The School will retain this information on the pupil file and wherever possible **will hold more than one emergency contact for each child**. The school will only share information about pupils with adults who have parental responsibility for a pupil or where a parent has given permission and the school has been supplied with the adult's full details in writing. If in any doubt about information sharing, staff should speak to the DSL or deputy DSL. Fears about sharing information must not be allowed to stand in the way of the need to promote the welfare and protect the safety of children.

8. CHILD PROTECTION CONFERENCES

8.1 Children's Services will convene a Child Protection conference once a child protection enquiry under Section 47 of the Children Act 1989 has been undertaken and the child is judged to be at continuing risk of significant harm. A review conference will take place once a child has been made the subject of a Child Protection Plan in order to monitor the safety of the child and the required reduction in risk.

8.2 Staff members may be asked to attend a child protection conference or core group meetings on behalf of the school in respect of individual children. Usually the person representing the school at these meetings will be the Headmaster or DSL. In any event, the person attending will need to have as much relevant up to date information about the child as possible; any member of staff may be required to contribute to this process.

8.3 All reports for child protection conferences will be prepared in advance using the guidance and template report. The information contained in the report will be shared with parents before the conference as appropriate and will include information relating to the child's physical, emotional and intellectual development and the child's presentation at school. In order to complete such reports, all relevant information will be sought from staff working with the child in school.

8.4 Clearly child protection conferences can be upsetting for parents. We recognise that we are likely to have more contact with parents than other professionals involved. We will work in an open and honest way with any parent whose child has been referred to Children's Services or whose child is subject to a child protection plan. Our responsibility is to promote the protection and welfare of all children and our aim is to achieve this in partnership with our parents.

9. SAFER RECRUITMENT

9.1 We will ensure that the Headmaster and at least one member of the Governing Body have completed appropriate safer recruitment training. In practice, at least of 3 of the Senior Leadership Team are trained in safer recruitment. At all times the Headmaster and Governing Body will ensure that safer recruitment practices are followed in accordance with the requirements of *'Keeping Children Safe in Education'*, DfE (Sept, 2020).

9.2 At Westfield School we will use the recruitment and selection process to deter and reject unsuitable candidates. We require evidence of original academic certificates. We do not accept testimonials and insist on taking up references prior to interview. We will question the contents of application forms if we are unclear about them, we will undertake Disclosure and Barring Service checks and use any other means of ensuring we are recruiting and selecting the most suitable people to work with our children.

9.3 We will maintain a Single Central Register of all safer recruitment checks carried out in line with statutory requirements.

10. SAFER WORKING PRACTICE

10.1 All staff have a responsibility to maintain public confidence in their ability to safeguard the welfare and best interests of children. They should adopt high standards of personal conduct in order to maintain confidence and respect of the general public and those with whom they work.

10.2 All staff will be provided with a copy of our school's code of conduct at induction, which sets out Westfield's expectations of staff behaviour. We will review our Code of Conduct regularly and ask staff to ensure that they are familiar with the current version. Staff are expected to carry out their duties in accordance with the Code of Conduct.

10.3 There will be occasion when some form of physical contact is inevitable, for example if a child has an accident or is hurt or is in a situation of danger to themselves or others around them. However, at all times the agreed guidelines for positive handling and intimate care must be adhered to.

10.4 If staff, visitors, volunteers or parent helpers are working with children alone they will, wherever possible, be visible to other members of staff. They will be expected to inform another member of staff of their whereabouts in school, who they are with and for how long. Doors should be left open wherever possible. Staff are responsible for their own actions and behaviour and should avoid any conduct which would lead any reasonable person to question their motivation and intentions.

10.5 Guidance about acceptable conduct and safe practice will be given to all staff and volunteers during induction. These are sensible steps that every adult should take in their daily professional conduct with children. This advice can be found in *'Guidance for Safer Working Practices for Adults who work with Children and Young People in Education Settings'* (2019). All staff and volunteers are expected to carry out their work in accordance with this guidance and will be made aware that failure to do so could lead to disciplinary action.

10.6 Use of mobile phones, i-pads and cameras in early years. It is our intention to provide an environment in which children, parents and staff are safe from images being recorded and inappropriately used in line with our policy Use of Electronic Devices in Early Years.

11. MANAGING ALLEGATIONS AGAINST STAFF & VOLUNTEERS

11.1 We will take all possible steps to safeguard our children and to ensure that the adults in our school are safe to work with children. We will always ensure that the procedures outlined in the *local procedures* and Part 4 of 'Keeping Children Safe in Education', DfE (Sept, 2020) are adhered to and will seek appropriate advice from the Local Authority Designated Officer (LADO). The LADO can be contacted to request a consultation or to make a referral.

11.2 If an allegation is made or information is received about any adult who works in our setting which indicates that they may be unsuitable to work with children, the member of staff receiving the information should inform the Headmaster immediately. This includes concerns relating to agency and supply staff and volunteers. Should an allegation be made against the Headmaster, this will be reported to the Chair of Governors. In the event that neither the Headmaster nor Chair of Governors is contactable on that day, the information must be passed to and dealt with by either the member of staff acting as Headmaster or the Vice Chair of Governors.

11.3 The Headmaster or Chair of Governors will seek advice from the LADO within one working day. No member of staff or the governing body will undertake further investigations before receiving advice from the LADO.

11.4 Any member of staff or volunteer who does not feel confident to raise their concerns with the Headmaster or Chair of Governors should contact the LADO directly. Further national guidance can be found at: [Advice on whistleblowing](#). The [NSPCC whistleblowing helpline](#) is also available for staff who do not feel able to raise concerns regarding child protection failures internally. Staff can call: 0800 028 0285 – line is available from 8:00am to 8:00pm, Monday to Friday or via e-mail: help@nspcc.org.uk.

11.5 The School has a legal duty to refer to the Disclosure and Barring Service and the NCTL anyone who has harmed, or poses a risk of harm, to a child, or if there is reason to believe the member of staff has committed one of a number of listed offences, and who has been removed from working (paid or unpaid) in regulated activity, or would have been removed had they not left. The DBS will consider whether to bar the person. If these circumstances arise in relation to a member of staff at our school, a referral will be made as soon as possible after the resignation or removal of the individual in accordance with advice from the LADO and/or HR.

12 RELEVANT POLICIES

12.1 To underpin the values and ethos of our school and our intent to ensure that pupils at our school are appropriately safeguarded the following policies are also included under our safeguarding umbrella:

- Staff Code of Conduct
- Data Protection
- Anti-Bullying
- Recruitment & Selection
- Whistle-blowing

- Attendance
- Media and ICT
- Health and Safety including site security
- Multicultural Education and Anti-Racism
- Equal Opportunities
- Intimate Care
- First Aid
- Educational visits including overnight stays
- Use of electronic devices in early years
- Uncollected Child

Each of the policies is reviewed and approved by the Board of Governors (see individual policies for relevant dates).

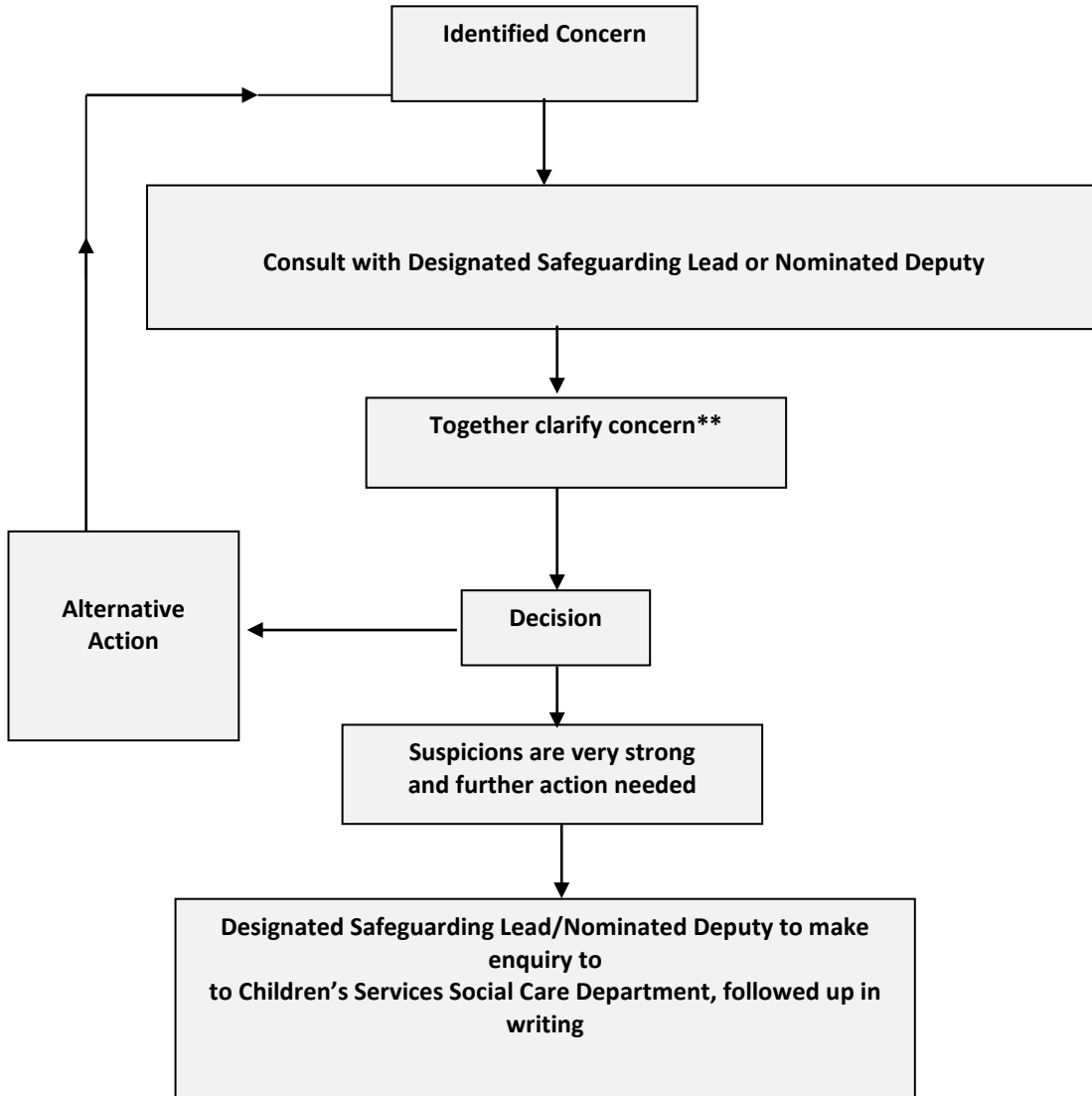
13. STATUTORY FRAMEWORK

This policy has been devised in accordance with the following legislation and guidance:

- *'Working Together to Safeguard Children: A guide to inter-agency working to safeguard and promote the welfare of children'*, DfE (2018)
- *'Keeping Children Safe in Education'*, DfE (Sept, 2020)
- Local Safeguarding procedures
- Guidance for Safer Working Practices for Adults who work with Children and Young People in Education Settings (May 2019).
- *'What to do if you're worried a child is being abused'*, DfE (March 2015)
- *'Information Sharing: Advice for practitioners'*, DfE (March 2015)
- *'The Prevent duty: Departmental advice for schools and childcare providers'*, DfE (2015)
- *'Mandatory Reporting of Female Genital Mutilation – procedural information'*, Home Office (October 2015)

Appendix A – Suspect child at risk. Action to take

Channels of communication should be quick and clear:



**

Any member of staff who is unhappy with the joint decision made with the Designated Safeguarding Lead can consult with the Headmaster/Chair of Governors or seek advice from key staff within the Local Authority

**Appendix B: Safeguarding Induction Sheet
(For new or supply staff and regular visitors or volunteers)**



We all have a statutory duty to safeguard and promote the welfare of children, and at our school we take this responsibility seriously.

If you have any concerns about a child or young person in our school, you must share this information immediately with our Designated Safeguarding Lead (DSL) or one of the alternative post holders.

Do not think that your worry is insignificant if it is about hygiene, appearance or behaviour – we would rather you told us as we would rather know about something that appears small than miss a worrying situation.

If you think the matter is very serious and may be related to child protection, for example, physical, emotional, sexual abuse or neglect, you must find one of the designated professionals detailed below and provide them with a written record of your concern, preferably on CPOMS, but , if necessary using the form attached to this. Other copies can be obtained from Mrs E Wise, Mrs K Meeson or Mrs N Alexanders. Please ensure you complete all sections as described.

If you are unable to locate a DSL, ask a member of the school office staff to find them and to ask them to speak with you immediately about a confidential and urgent matter.

Any allegation concerning a member of staff, a child’s foster carer or a volunteer should be reported immediately to the Headmaster. If an allegation is made about the Headmaster you should pass this information to the Chair of the Governing Body. Alternatively, you can contact the Local Authority Designated Officer on 01603 223473. [NSPCC whistleblowing helpline](#) is also available for staff who do not feel able to raise concerns regarding child protection failures internally. Staff can call: 0800 028 0285 – line is available from 8:00am to 8:00pm, Monday to Friday or via e-mail: help@nspcc.org.uk.

The people you should talk to in school are:

Designated Safeguarding Lead (DSL):	Mrs E Wise
Location of office:	Senior House
Contact Number:	0191 255 3980
Alternative Designated Leads:	Mrs K Meeson, Mrs N Alexanders
Location of office:	Junior House
Contact Number:	0191 255 3980
Chair of Governing Body	Mrs J Keep
Contact Number:	0191 255 3980

At Westfield School we strive to safeguard and promote the welfare of all of our children.

SPECIFIC SAFEGUARDING ISSUES

Appendix C Abuse and Neglect

Knowing what to look for is vital to the early identification of abuse and neglect. **All** staff should be aware of the indicators of abuse and neglect so that they are able to identify cases of children who may be in need of help or protection. If staff are unsure they should **always** speak to the Designated Safeguarding Lead (or deputy)

Abuse, neglect and safeguarding issues are rarely stand-alone events that can be covered by one definition or label. In most cases, multiple issues will overlap with one another.

Indicators of abuse and neglect

Abuse: a form of maltreatment of a child. Somebody may abuse or neglect a child by inflicting harm or failing to act to prevent harm. Children may be abused in a family or in an institutional or community setting; by those known to them, or, more rarely, by others. Abuse can take place wholly online, or technology may be used to facilitate offline abuse. Children may be abused by an adult or adults or by another child or children.

We recognise that children are also vulnerable to physical, sexual and emotional abuse by their peers or siblings. This is most likely to include, but not limited to:

- bullying (including cyber bullying)
- physical abuse, hitting, kicking, shaking, biting, hair pulling or otherwise causing physical harm
- gender based violence/sexual assaults
- sexting (also known as youth produced sexual imagery)
- initiation / hazing type violence and ritual

Abuse perpetrated by children can be just as harmful as that perpetrated by an adult, so it is important to remember the impact on the victim of the abuse as well as to focus on the support for the child or young person exhibiting the harmful behaviour. Such abuse will always be taken as seriously as abuse perpetrated by an adult and the same safeguarding children procedures will apply in respect of any child who is suffering or likely to suffer significant harm; staff must never tolerate or dismiss concerns relating to peer on peer abuse.

Physical Abuse may involve hitting, shaking, throwing, poisoning, burning or scalding, drowning, suffocating or otherwise causing physical harm to a child. Physical harm may also be caused when a parent or carer fabricates the symptoms of or deliberately induces illness in a child.

Sexual Abuse involves forcing or enticing a child or young person to take part in sexual activities, not necessarily involving a high level of violence, whether or not the child is aware of what is happening. The activities may involve physical contact, including assault by penetration (for example, rape or oral sex) or non-penetrative acts such as masturbation, kissing, rubbing and touching outside of clothing. They may also include non-contact activities, such as involving children in looking at, or in the production of, sexual images, watching sexual activities, encouraging children to behave in sexually inappropriate ways, or grooming a child in preparation for abuse (including via the internet). Sexual abuse is not solely perpetrated by adult males. Women can also commit acts of sexual abuse, as can other children.

Emotional Abuse is the persistent emotional maltreatment of a child such as to cause severe and persistent adverse effects on the child's emotional development.

It may involve conveying to children that they are worthless or unloved, inadequate, or valued only insofar as they meet the needs of another person. It may include not giving the child opportunities to express their views, deliberately silencing them or 'making fun' of what they say or how they communicate. It may feature age or developmentally inappropriate expectations being imposed on children. These may include interactions that are beyond the child's developmental capability, as well as overprotection and limitation of exploration and learning, or preventing the child participating in normal social interaction. It may involve seeing or hearing the ill-treatment of another. It may involve serious bullying (including cyberbullying), causing children frequently to feel frightened or in danger, or the exploitation or corruption of children. Some level of emotional abuse is involved in all types of maltreatment of a child, though it may occur alone.

We recognise that children with special educational needs (SEN) and disabilities can face additional safeguarding challenges and these are discussed in staff training. These additional barriers can include:

- assumptions that indicators of possible abuse such as behaviour, mood and injury relate to the child's disability without further exploration;
- children with SEN and disabilities can be disproportionately impacted by things like bullying - without outwardly showing any signs; and
- communication barriers and difficulties in overcoming these barriers.

Neglect is the persistent failure to meet a child's basic physical and/or psychological needs, likely to result in the serious impairment of the child's health or development. Neglect may occur during pregnancy as a result of maternal substance abuse. Once a child is born, neglect may involve a parent or carer failing to:

- provide adequate food and clothing, shelter (including exclusion from home or abandonment)
- protect a child from physical and emotional harm or danger
- ensure adequate supervision (including the use of inadequate caretakers)
- ensure access to appropriate medical care or treatment.

It may also include neglect of, or unresponsiveness to, a child's basic emotional needs.

Contextual Safeguarding

Safeguarding incidents and/or behaviours can be associated with factors outside school or college and/or can occur between children outside the school or college. All staff should be considering the context within such incidents and/or behaviours occur. This is known as contextual safeguarding, which simply means assessments of children should consider whether wider environmental factors are present in a child's life that are a threat to their safety and/or welfare.

Appendix D Child Exploitation

Appendix D1: Child Criminal Exploitation (CCE)

CCE is where an individual or group takes advantage of an imbalance of power to coerce, control, manipulate or deceive a child into any criminal activity (a) in exchange for something the victim needs or wants, and/or (b) for the financial or other advantage of the perpetrator or facilitator and/or (c) through violence or the threat of violence. The victim may have been criminally exploited even if the activity

appears consensual. CCE does not always involve physical contact; it can also occur through the use of technology. CCE can include children being forced to work in cannabis factories, being coerced into moving drugs or money across the country (county lines, see D3), forced to shoplift or pickpocket, or to threaten other young people. Some of the following can be indicators of CCE:

- children who appear with unexplained gifts or new possessions
- children who associate with other young people involved in exploitation
- children who suffer from changes in emotional well-being
- children who misuse drugs and alcohol
- children who go missing for periods of time or regularly come home late
- children who regularly miss school or education or do not take part in education.

Appendix D2 Child Sexual Exploitation (CSE)

CSE occurs where an individual or group takes advantage of an imbalance of power to coerce, manipulate or deceive a child into sexual activity (a) in exchange for something the victim needs or wants, and/or (b) for the financial advantage or increased status of the perpetrator or facilitator. The victim may have been sexually exploited even if the sexual activity appears consensual. CSE does not always involve physical contact; it can also occur through the use of technology. CSE can affect any child or young person (male or female) under the age of 18 years, including 16 and 17 year olds who can legally consent to have sex. It can include both contact (penetrative and non-penetrative acts) and non-contact sexual activity and may occur without the child or young person's immediate knowledge (e.g. through others copying videos or images they have created and posted on social media).

The following list of indicators is not exhaustive or definitive but it does highlight common signs which can assist professionals in identifying children or young people who may be victims of sexual exploitation.

Signs include:

- underage sexual activity
- inappropriate sexual or sexualised behaviour
- sexually risky behaviour, 'swapping' sex
- repeat sexually transmitted infections
- in girls, repeat pregnancy, abortions, miscarriage
- receiving unexplained gifts or gifts from unknown sources
- having multiple mobile phones and worrying about losing contact via mobile
- having unaffordable new things (clothes, mobile) or expensive habits (alcohol, drugs)
- changes in the way they dress
- going to hotels or other unusual locations to meet friends
- seen at known places of concern
- moving around the country, appearing in new towns or cities, not knowing where they are
- getting in/out of different cars driven by unknown adults
- having older boyfriends or girlfriends
- contact with known perpetrators
- involved in abusive relationships, intimidated and fearful of certain people or situations
- hanging out with groups of older people, or anti-social groups, or with other vulnerable peers
- associating with other young people involved in sexual exploitation
- recruiting other young people to exploitative situations

- truancy, exclusion, disengagement with school, opting out of education altogether
- unexplained changes in behaviour or personality (chaotic, aggressive, sexual, mood swings, volatile behaviour, emotional distress)
- self-harming, suicidal thoughts, suicide attempts, overdosing, eating disorders
- drug or alcohol misuse
- getting involved in crime / police involvement, police records
- involved in gangs, gang fights, gang membership
- injuries from physical assault, physical restraint, sexual assault.

Appendix D3 County Lines

County lines is a term used to describe gangs and organised criminal networks involved in exporting illegal drugs (primarily crack cocaine and heroin) into one or more importing areas [within the UK], using dedicated mobile phone lines or other form of “deal line”.

Criminal exploitation of children is a geographically widespread form of harm that is a typical feature of county lines. Criminal networks or gangs groom and exploit children and young people to carry drugs and money from urban areas to suburban and rural areas, market and seaside towns. Offenders will often use coercion, intimidation, violence (including sexual violence) and weapons to ensure compliance of victims. Children can be targeted and recruited into county lines in a number of locations including schools, further and higher educational institutions, pupil referral units, special educational needs schools, children’s homes and care homes. Key to identifying potential involvement in county lines are missing episodes, when the victim may have been trafficked for purposes of transporting drugs. A referral to the National Referral Mechanism should be considered. Like other forms of abuse and exploitation, county line exploitation:

Signs and Symptoms may include:

- persistently going missing from home or school
- being found out of area
- unexplained acquisition of money, clothes or mobile phone
- excessive receipt of calls and text messages
- relationships with older, controlling individuals
- associated with gangs
- leaving home or care without explanation
- suspicion of self-harm, physical assault or unexplained injuries
- parental concerns
- significant decline in school performance
- significant changes in emotional wellbeing

Appendix E So called “Honour-based” Abuse

So-called ‘honour-based’ abuse (HBA) encompasses incidents or crimes which have been committed to protect or defend the honour of the family and/or the community, including:

- Female Genital Mutilation
- Forced Marriage
- Breast Ironing

Abuse committed in the context of preserving “honour” often involves a wider network of family or community pressure and can include multiple perpetrators. It is important to be aware of this dynamic and additional risk factors when deciding what form of safeguarding action to take. All forms of HBA are abuse (regardless of the motivation) and should be handled and escalated as such. If in any doubt, staff should speak to the Designated Safeguarding Lead (or deputy). Professionals in all agencies, and individuals and groups in relevant communities, need to be alert to the possibility of a child being at risk of HBA, or already having suffered HBA.

E1: Female Genital Mutilation (FGM)

It is essential that staff are aware of FGM practices and the need to look for signs, symptoms and other indicators of FGM.

What is FGM?

It involves procedures that intentionally alter/injure the female genital organs for non-medical reasons.

4 types of procedure:

Type 1	Type 2	Type 3	Type 4
Clitoridectomy: partial/total removal of clitoris	Excision: partial/total removal of clitoris and labia minora	Infibulation entrance to vagina is narrowed by repositioning the inner/outer labia	All other procedures that may include: pricking, piercing, incising, cauterising and scraping the genital area.

Why is it carried out?

Belief that:

- FGM brings status/respect to the girl – social acceptance for marriage
- Preserves a girl’s virginity
- Part of being a woman / rite of passage
- Upholds family honour
- Cleanses and purifies the girl
- Gives a sense of belonging to the community
- Fulfils a religious requirement
- Perpetuates a custom/tradition
- Helps girls be clean / hygienic
- Is cosmetically desirable
- Mistakenly believed to make childbirth easier

Is FGM legal?

FGM is internationally recognised as a violation of human rights of girls and women. It is **illegal** in most countries including the UK.

Circumstances and occurrences that may point to FGM happening

- Child talking about getting ready for a special ceremony
- Family taking a long trip abroad
- Child's family being from one of the 'at risk' communities for FGM (Kenya, Somalia, Sudan, Sierra Leon, Egypt, Nigeria, Eritrea as well as non-African communities including Yemeni, Afghani, Kurdistan, Indonesia and Pakistan)
- Knowledge that the child's sibling has undergone FGM
- Child talks about going abroad to be 'cut' or to prepare for marriage

Signs that may indicate a child has undergone FGM:

- Prolonged absence from school and other activities
- Behaviour change on return from a holiday abroad, such as being withdrawn and appearing subdued
- Bladder or menstrual problems
- Finding it difficult to sit still and looking uncomfortable
- Complaining about pain between the legs
- Mentioning something somebody did to them that they are not allowed to talk about
- Secretive behaviour, including isolating themselves from the group
- Reluctance to take part in physical activity
- Repeated urinal tract infection
- Disclosure

The 'One Chance' rule:

As with Forced Marriage there is the 'One Chance' rule. It is essential that settings /schools/colleges take action **without delay**

Where FGM has taken place, there has been a **mandatory reporting duty** placed on teachers since 31st October 2015. Section 5B of the Female Genital Mutilation Act 2003 (as inserted by section 74 of the Serious Crime Act 2015) places a statutory duty upon teachers in England and Wales, to report to the police where they discover (either through disclosure by the victim or visual evidence) that FGM appears to have been carried out on a girl under 18. Those failing to report such cases will face disciplinary sanctions. Further information on when and how to make a report can be found in the following Home Office guidance: '[Mandatory Reporting of Female Genital Mutilation - procedural information](#)' (October 2015).

Further information: www.gov.uk/government/publications/multi-agency-statutory-guidance-on-female-genital-mutilation

E2: Forced Marriage

Forcing a person into marriage is a crime in England and Wales. A forced marriage is one entered into without the full and free consent of one or both parties and where violence, threats or any other form of coercion is used to cause a person to enter into the marriage. Threats can be physical or emotional and psychological. A lack of full and free consent can be where a person does not consent or where they cannot consent (if they have learning disabilities, for example). Nevertheless, some communities use religion and culture as a way to coerce a person into marriage. Schools and colleges can play an important role in safeguarding children from forced marriage. (KCSIE 2020)

Signs and symptoms may include:

- Students may appear anxious, depressed and emotionally withdrawn with low self-esteem.
- They may have mental health disorders and display behaviours such as self-harming, self-cutting or anorexia
- Sometimes they may come to the attention of the police having been discovered shoplifting or taking drugs or alcohol
- Often students' symptoms can be exacerbated in the periods leading up to the holiday season.
- Students may present with a sudden decline in their performance, aspirations or motivation.
- They may be subject to excessive restrictions and control at home.
- Some students may not be allowed to attend any extra-curricular or after-school activities
- Girls and young women may be accompanied to and from school/college, and even during lunch breaks.
- Some students may stop attending school or college
- Their homework is incomplete or appears rushed. This may be the result of being actively discouraged from doing it by family members.
- Students may do their homework late at night, which frequently shows in school because they are lethargic, unable to concentrate and have a general appearance of tiredness.
- Professionals being told that the student is out of the country.
- There are occasions when older siblings (usually brothers) and cousins keep a close eye on girls to make sure that they do not meet anyone or talk to friends.
- Conflict between the student and their parents about whether the student will be allowed to continue their education
- Family history of older siblings leaving education early and marrying early

Appendix F – Preventing Radicalisation

Children are vulnerable to extremist ideology and radicalisation. Similar to protecting children from other forms of harms and abuse, protecting children from this risk should be a part of a schools' or colleges' safeguarding approach.

The Prevent Duty

All schools and colleges are subject to a duty under section 26 of the Counter Terrorism and Security Act 2015 (the CTSA 2015), in the exercise of their functions, to have "due regard to the need to prevent people from being drawn into terrorism". This duty is known as the Prevent duty.

Schools Leaders must:

- Establish or use existing mechanisms for understanding the risk of extremism
- Ensure staff understand the risk and build capabilities to deal with it
- Communicate and promote the importance of the duty
- Ensure staff implement the duty effectively

Channel

Channel is a voluntary, confidential support programme which focuses on providing support at an early stage to people who are identified as being vulnerable to being drawn

Prevent referrals may be passed to a multi-agency Channel panel, which will discuss the individual referred to determine whether they are vulnerable to being drawn into terrorism and consider the appropriate support required. A representative from the school or college may be asked to attend the Channel panel to

help with this assessment. An individual's engagement with the programme is entirely voluntary at all stages.

Understanding and recognising risks and vulnerabilities of radicalisation

Children and young people can be drawn into violence or they can be exposed to the messages of extremist groups by many means. These may include through the influence of family members or friends and/or direct contact with extremist groups and organisations or, increasingly, through the internet. This can put a young person at risk of being drawn into criminal activity and has the potential to cause **significant harm**.

Staff should use their judgement in identifying children who might be at risk of radicalisation and act proportionately which may include the designated safeguarding lead (or deputy) making a Prevent referral.

Possible indicators include:

- Use of inappropriate language
- Possession of violent extremist literature
- Behavioural changes
- Advocating violent actions and means;
- Associated with known extremists
- Seeking to recruit others to an extremist ideology

Further information: www.gov.uk/government/publications/prevent-duty-guidance

Appendix G: Private Fostering

Many people find themselves looking after someone else's child without realising that they may be involved in private fostering. A private fostering arrangement is one that is made privately (that is to say without the involvement of a local authority) for the care of a child under the age of 16 (under 18, if disabled) by someone other than a parent or immediate relative. If the arrangement is to last, or has lasted, for 28 days or more it is private fostering.

The Children Act 1989 defines a relative as a grandparent, brother, sister, uncle or aunt (whether of full blood or half blood or by marriage or civil partnership), or a step parent.

People become involved in private fostering for all kinds of reasons. Examples of private fostering include – Safeguarding Policy for Schools and Education Services - September 2016

- Children who need alternative care because of parental illness
- Children whose parents cannot care for them because their work or study involves long or antisocial hours
- Children sent from abroad to stay with another family, usually to improve their educational opportunities
- Unaccompanied asylum seeking and refugee children
- Teenagers who stay with friends (or other non-relatives) because they have fallen out with their parents
- Children staying with families while attending a school away from their home area

There is a mandatory duty on the school to inform the local authority of a private fostering. The local authority has a duty to check that the young person is being properly cared for and that the arrangement is satisfactory.

Further information: www.gov.uk/government/publications/children-act-1989-private-fostering

Appendix H: Children Missing Education:

A child going missing from education is a potential indicator of abuse or neglect, including sexual exploitation, FGM, forced marriage or travelling to conflict zones. School staff will be alert to these safeguarding concerns when a pupil goes missing for an extended period, or on repeat occasions.

The school must notify the local authority of any pupil/student who fails to attend school regularly after making reasonable enquiries, or has been absent without the school's permission for a continuous period of 10 days or more. The school (regardless of designation) must also notify the local authority of any pupil who is to be deleted from the admission register because she –

- Has been taken out of school by their parents and is being educated outside the school system (e.g. home education)
- Has ceased to attend school and no longer lives within a reasonable distance of the school at which she is registered (moved within the city, within country or moved abroad but failed to notify the school of the change)
- Displaced as a result of a crisis e.g. domestic violence or homelessness
- Has been certified by a medical officer as unlikely to be in a fit state of health to attend school before ceasing to be of compulsory school age, and neither she nor her parent has indicated the intention to continue to attend the school after ceasing to be of compulsory school age
- Is in custody for a period of more than four months due to a final court order and the proprietor does not reasonably believe she will return to the school at the end of that period; or
- Has been permanently excluded

Our school will demonstrate that we have made the necessary enquiries to ascertain the whereabouts of children that would be considered 'missing'. School absences may be a sign of abuse so all staff will follow procedures and report any concerns regarding absences.

Further information can be found in 'Children Missing Education: statutory guidance for local authorities – September 2016' www.gov.uk/government/publications/children-missing-education

Appendix I: Peer on Peer Abuse

At Westfield School we recognise that children are vulnerable to and capable of abusing their peers. We take such abuse as seriously as abuse perpetrated by an adult. Peer on peer abuse will not be tolerated or passed off as part of "banter" or "growing up".

In cases where peer on peer abuse is identified we will follow our child protection procedures, recognising that both the victim and perpetrator will require support.

We recognise that peer on peer abuse can manifest itself in many ways such as:

- Child Sexual Exploitation/Child Criminal Exploitation
- Bullying
- Radicalisation

- Abuse in intimate friendships
- Children who display sexually harmful behaviour
- Gang associated and serious violence
- Technology can be used for bullying and other abusive behaviour

There are a number of factors that make children more vulnerable to peer on peer abuse: experience of abuse within their family, living with domestic violence, young people in care, children who go missing, children with additional needs (SEN and/or disabilities).

Research tells us girls are more frequently identified as being abused by their peers, and girls are more likely to experience unwanted sexual touching in schools. Boys are less likely to report intimate relationship abuse. Boys report high levels of victimisation in areas where they are affected by gangs. There is an increasing evidence base emerging about the sexual exploitation of boys (both by adults and peers). We recognise that both boys and girls experience peer on peer abuse but they do so in gendered ways.

A difficult feature of peer abuse is that the perpetrators could be victims themselves and possibly are being abused by their parents or caregivers.

Relationship abuse is unacceptable behaviour between two people. You don't have to be an 'official couple' to experience abuse and it doesn't matter what your relationship looks like; gay, straight or bi, or whether you're a girl, boy or have another gender identity.

Further information: www.disrespectnobody.co.uk/relationship-abuse/what-is-relationship-abuse/

Some of the complicated reasons children abuse other children:

- The child may have been emotionally, physically, or sexually abused themselves.
- The child may have witnessed physical or emotional violence.
- The child may have viewed sexually explicit movies, video games or other materials.
- The child may have just acted impulsively without meaning to harm anyone.
- Peer abuse must be taken extremely seriously for these reasons. It could be an indicator of even worse abuse going on in the child's home.

Preventing Peer on Peer Abuse:

Peer abuse can be prevented. Adults who work with children must be aware of the potential for abuse between children.

- Having clear robust policies on dealing with key issues such as cyber bullying.
- Ensuring staff and students are aware of the policies.
- Identify any blind spots within the school
- Supervise and be aware of potential risky areas, tents in play areas etc.
- Pay attention and monitor children who are sneaking off in areas out of view.
- Take steps to prevent isolation.
- Separate children if needed.
- Increase supervision during key times.
- If you suspect a child is abusing another, ensure you pass this onto a Designated Person.
- Where risk is identified having a student risk assessment in place.

Appendix I: Sexually Harmful Behaviour

Sexualised Behaviour

Green Behaviours	Amber Behaviours	Red Behaviours
<p>are part of safe and healthy sexual development which are:</p> <ul style="list-style-type: none"> displayed between children or young people of similar age or developmental ability reflect curiosity, experimentation, consensual activities and positive choices 'normal' but inappropriate within the school/classroom setting 	<p>are potentially outside safe and healthy development due to:</p> <ul style="list-style-type: none"> age or developmental differences activity type, frequency, duration or context 	<p>are clearly outside safe and healthy development and:</p> <ul style="list-style-type: none"> involve much more coerciveness, secrecy, compulsiveness & threats require action from school & other agencies

For further information of sexualised behaviour thresholds visit www.brook.org.uk

Sexual Violence & Harassment in Schools

Sexual violence and sexual harassment can occur between two children of any sex. They can also occur through a group of children sexually assaulting or sexually harassing a single child or group of children.

- sexual harassment is 'unwanted conduct of a sexual nature' that can occur online and offline.
- Sexual harassment can include sexual comments, such as: telling sexual stories, making lewd comments, making sexual remarks about appearance, sexual "jokes" or taunting; physical behaviour, such as: deliberating brushing against someone, interfering with someone's clothes
- online sexual harassment, which might include: non-consensual sharing of sexual images / videos and sharing sexual images and videos (both often referred to as sexting); inappropriate sexual comments on social media; exploitation; coercion and threats.
- it is more likely that girls will be the victims of sexual violence and more likely that sexual harassment will be perpetrated by boys.
- children with Special Educational Needs and Disabilities (SEND) can be especially vulnerable

At our school we are aware of the importance of:

- making clear that sexual violence and sexual harassment is not acceptable, will never be tolerated and is not an inevitable part of growing up;
- not tolerating or dismissing sexual violence or sexual harassment as "banter", "part of growing up", "just having a laugh" or "boys being boys"; and
- challenging behaviours (which are potentially criminal in nature), such as grabbing bottoms, breasts and genitalia . Dismissing or tolerating such behaviours risks normalising them.

Further information:

www.gov.uk/government/publications/sexual-violence-and-sexual-harassment-between-children-in-schools-and-colleges

Upskirting

'Upskirting' typically involves taking a picture under a person's clothing without them knowing, with the intention of viewing their genitals or buttocks to obtain sexual gratification, or cause the victim humiliation, distress or alarm. This is now a criminal offence so staff should report concerns immediately to the Designated Safeguarding Lead.

Further information:

www.gov.uk/government/publications/sexual-violence-and-sexual-harassment-between-children-in-schools-and-colleges

Sexting

Sexting can be defined as 'sending or posting sexually suggestive images, including nude or semi-nude photographs, via mobiles or over the internet.'

If staff become concerned about a 'sexting' issue they should not look at, share or print any indecent image and should:

Step 1: If a device is involved, confiscate it and set it to flight mode or, if not possible, switch it off/

Step 2: Seek advice - give the electronic device immediately to the DSL. Report your concerns following your normal child protection procedures.

Concerning factors that DSLs should look out for:

- ✓ Is there a significant age difference between the sender/receiver?
- ✓ Is there any external coercion involved or encouragement beyond the sender/receiver?
- ✓ Do you recognise the child as more vulnerable than usual i.e. at risk? Is the image of a severe or extreme nature?
- ✓ Is the situation isolated or has the image been more widely distributed?
- ✓ Have these children been involved in a sexting incident before?
- ✓ Are there other circumstances relating to either sender or recipient that may add cause for concern i.e. difficult home circumstances?

Remember: The production and distribution of sexting images involving anyone under the age of 18 is illegal and needs very careful management for all those involved.

Further information: www.gov.uk/government/groups/uk-council-for-child-internet-safety-ukccis

Appendix K: Trafficking & Modern Slavery

"Trafficking of persons" shall mean the recruitment, transportation, transfer, harbouring or receipt of persons, by means of the threat or use of force or other forms of coercion, of abduction, of fraud, of deception, of the abuse of power or of a position of vulnerability or of the giving or receiving of payments or benefits to achieve the consent of a person having control over another person, for the purpose of

exploitation. Exploitation shall include, at a minimum, the exploitation of the prostitution of others or other forms of sexual exploitation, forced labour or services, slavery or practices similar to slavery, servitude or the removal of organs.

“Child” shall mean any person under eighteen years of age.

The Palermo Protocol establishes children as a special case. Any child transported for exploitative reasons is considered to be a trafficking victim, whether or not they have been forced or deceived. This is partly because it is **not considered possible for children to give informed consent**. Even when a child understands what has happened, they may still appear to submit willingly to what they believe to be the will of their parents or accompanying adults. It is important that these children are protected too.

Why are children trafficked?

Children are trafficked for many reasons, including sexual exploitation, domestic servitude, labour, benefit fraud and involvement in criminal activity such as pick-pocketing, theft and working in cannabis farms. There are a number of cases of minors being exploited in the sex industry. Although there is no evidence of other forms of exploitation such as ‘organ donation or ‘harvesting’, all agencies should remain vigilant. Children may be trafficked from other countries for a variety of reasons. There are a number of factors in the country of origin which might make children vulnerable to being trafficked.

The factors listed below are by no means a comprehensive list:

- poverty
- lack of education
- discrimination
- cultural attitudes
- grooming
- dysfunctional families
- political conflict and economic transition and
- inadequate local laws and regulations

Potential indicators

Once in the UK the child:

- receives unexplained/unidentified phone calls whilst in placement/temporary accommodation
- shows signs of physical or sexual abuse, and/or has contracted a sexually transmitted infection or has an unwanted pregnancy
- has a history with missing links and unexplained moves
- has gone missing from Local Authority care
- is required to earn a minimum amount of money every day
- works in various locations
- has limited freedom of movement
- appears to be missing for periods
- is known to beg for money
- performs excessive housework chores and rarely leaves the residence;

- is being cared for by adult/s who are not their parents and the quality of the relationship between the child and their adult carers is not good; is one among a number of unrelated children found at one address
- has not been registered with or attended a GP practice
- has not been enrolled in school
- has to pay off an exorbitant debt, e.g. for travel costs, before having control over own earnings, is permanently deprived of a large part of their earnings by another person; and/or
- is excessively afraid of being deported

Further information: www.gov.uk/government/publications/safeguarding-children-who-may-have-been-trafficked-practice-guidance

Appendix L: Domestic Abuse

The cross-government definition of domestic violence and abuse is:

Any incident or pattern of incidents of controlling, coercive, threatening behaviour, violence or abuse between those aged 16 or over who are, or have been, intimate partners or family members regardless of gender or sexuality. The abuse can encompass, but is not limited to:

- psychological
- physical
- sexual
- financial
- emotional

Exposure to domestic abuse and/or violence can have a serious, long lasting emotional and psychological impact on children. In some cases, a child may blame themselves for the abuse or may have had to leave the family home as a result. (KCSIE pg. 66)

Signs, Indications and Effects:

It is often difficult to tell if domestic abuse is happening because it usually takes place in the family home and abusers can act very differently when other people are around. Children who witness domestic abuse may:

- become aggressive
- display anti-social behaviour
- suffer depression or anxiety
- not do as well in school – due to difficulties at home or disruption of moving to as well as from refuges

Other signs and symptoms may include:

Withdrawn, suddenly behaves differently, clingy, problems sleeping, eating disorders, wets the bed, soils clothes, takes risk, misses school, changes in eating habits, obsessive behaviour, nightmares, drugs, alcohol, self-harm, thoughts of suicide

Source: www.nspcc.org.uk

Some children may not display any symptoms / behaviours that may be a cause for concern. 'What is life like at home?' – is a good question to use regularly with all children.

We are an 'Operation Encompass' school

Operation Encompass operates in the majority of police forces across England. It helps police and schools work together to provide emotional and practical help to children. The system ensures that when police are called to an incident of domestic abuse, where there are children in the household who have experienced the domestic incident, the police will inform the key adult (usually the designated safeguarding lead) in school before the child or children arrive at school the following day. This ensures that the school has up to date relevant information about the child's circumstances and can enable support to be given to the child according to their needs.

Homelessness

Types of homelessness and bad housing

- living in temporary or emergency accommodation (such as B & Bs and hostels)
- hidden homelessness (staying with friends or family on a temporary basis or living in overcrowded conditions)
- Couch / Sofa surfing, moving from one place to another
- Being at risk of abuse or violence leading to homelessness or overcrowding

Impact of homelessness

- Practical issues include loss of possessions required for school e.g. books, uniform etc.
- Maybe unkempt due to lack of laundry services
- Physically exhausted due to sleeping arrangements
- Emotionally exhausted due to increased stress
- Signs of severe emotional trauma leading to emotional stress, anxiety
- Changes in behaviour or/and problematic behaviour
- Student may become withdrawn or aggressive
- If placed out of area they may arrive late or miss school due to transport / financial difficulties
- The student's ability to maintain relationships may be affected
- May 'stand out' more to peers, leading to feelings of alienation and self-consciousness
- Impact on attainment levels and ability to learn

(Source: Shelter 2017)

Appendix M – Key Safeguarding Contacts

Children’s Social Care (Newcastle upon Tyne)	
Initial Response Service Children's Social Care Civic Centre, Barras Bridge Newcastle upon Tyne NE1 8QH Tel: 0191 277 2500	Out of hours Emergency Duty Team Civic Centre Barras Bridge Newcastle upon Tyne NE1 8PU Tel: 0191 2787878
Children's Social Care West Children's Services Directorate, Westgate College West Road Newcastle upon Tyne, NE4 9LU Tel: 0191 277 2111	Children's Social Care East Children's Services Directorate, Allendale Depot, Allendale Road Byker Newcastle upon Tyne, NE6 2SZ Tel: 0191 2788500
LADO (Newcastle upon Tyne)	Telephone Number
Melanie Scott Civic Centre Barras Bridge Newcastle upon Tyne NE1 8PU	Tel: 0191 277 4636
Children’s Services (North Tyneside)	
Social work assessment	Telephone: 0345 2000 109 Email: masct@northtyneside.gov.uk
LADO (North Tyneside)	Telephone Number / Email
Majella Tallack Quadrant West Silverlink North Cobalt Business Park North Tyneside NE27 0BY	Tel: 0345 2000 109 (office hours) Tel: (0191) 200 6800 (evenings and weekends)
Children’s Social Care (Northumberland)	
Children’s Social Care Locality Teams:	Monday to Thursday 8.30am – 5pm Friday 8.30am – 4.30pm
<ul style="list-style-type: none"> • Central Locality Ashington • North Locality Alnwick and Berwick • South East Locality Blyth and Cramlington • West Locality Hexham • Disabled Children Team • 16+ Team 	01670 536000 01670 629400 01670 629600 01434 611499 01670 516131 01670 852225
Out of Hours Contact	01670 822386
LADO (Northumberland)	Telephone Number / Email
Adam Hall	Direct Line: 07342057398 General Line: 01670 624888 Email: adam.hall01@northumberland.gov.uk

Children's Social Care (Gateshead)	
Referral and Assessment Team 8.30am - 5pm (Mon to Thurs) 8.30am - 4.30pm (Fri)	Tel: (0191) 433 2653
Emergency Duty Team	Tel: (0191) 477 0844 R&Aduty@gateshead.gov.uk R&Aduty@gateshead.gcsx.gov.uk
LADO (Gateshead)	
Telephone Number / Email	
Local Authority Designated Officer	Tel: (0191) 433 8021

Children's Social Care (South Tyneside)	
Children's Referral and Assessment Team 38 Laygate Place South Shields Tyne and Wear NE33 5RT	Tel: (0191) 424 5010
LADO (South Tyneside)	
Telephone Number / Email	
Michael Hackett Interim Safeguarding Manager /LADO	Tel: (0191) 454 5021 Email: csu@southtyneside.gov.uk

Children's Social Care (Sunderland)	
Children's Safeguarding	Tel: (0191) 520 5560 (available 8.30am to 5.15pm Monday - Thursday, 8.30am to 4.45pm Friday)
Or the Out of Hours Team	Tel: (0191) 520 5552 (also available 24 hours Saturday and Sunday)
LADO (Sunderland)	
Telephone Number / Email	
Carol Glasper	Tel: (0191) 5613901 Email: carol.glasper@sunderland.gov.uk Or: lado@sunderland.gov.uk Secure email addresses: carol.glasper@sunderland.gcsx.gov.uk lado@sunderland.gcsx.gov.uk

Police / Law & Order

Department/Station	Telephone Number
Child Abuse Investigation Units <ul style="list-style-type: none"> • Sunderland - Farrington Police Station • South Tyneside - South Shields Police Station • Gateshead - Whickham Police Station • North Tyneside - North Shields (Unicorn House) • Newcastle - Etal Lane Police Station • Northumberland - Bedlington Police Station 	Tel: 101 (non-emergency) 999 (emergency)
Child Exploitation and Online Protection (CEOPS)	Tel: 0370 496 7622
Prevent team	Tel: 101 ext. 63854 Email: specialbranch@northumbria.pnn.police.uk
Confidential Anti-Terrorist hotline	0800 789 321

Education

Newcastle upon Tyne City Council	Telephone Number
Attendance Service The Heaton Centre Trewitt Road Heaton Newcastle upon Tyne NE6 5DY	Tel: 0191 277 4500 Email: attendanceservice@newcastle.gov.uk

NSPCC

Specialisms	Telephone Number / Email
NSPCC Support Helpline	Tel: 0808 800 5000 Email: help@nspcc.org.uk
NSPCC Whistleblowing Helpline	Tel: 0808 800 5000 Email: help@nspcc.org.uk
NSPCC FGM Helpline	Tel: 0800 028 3550

Appendix M
Cause for Concern Sheet

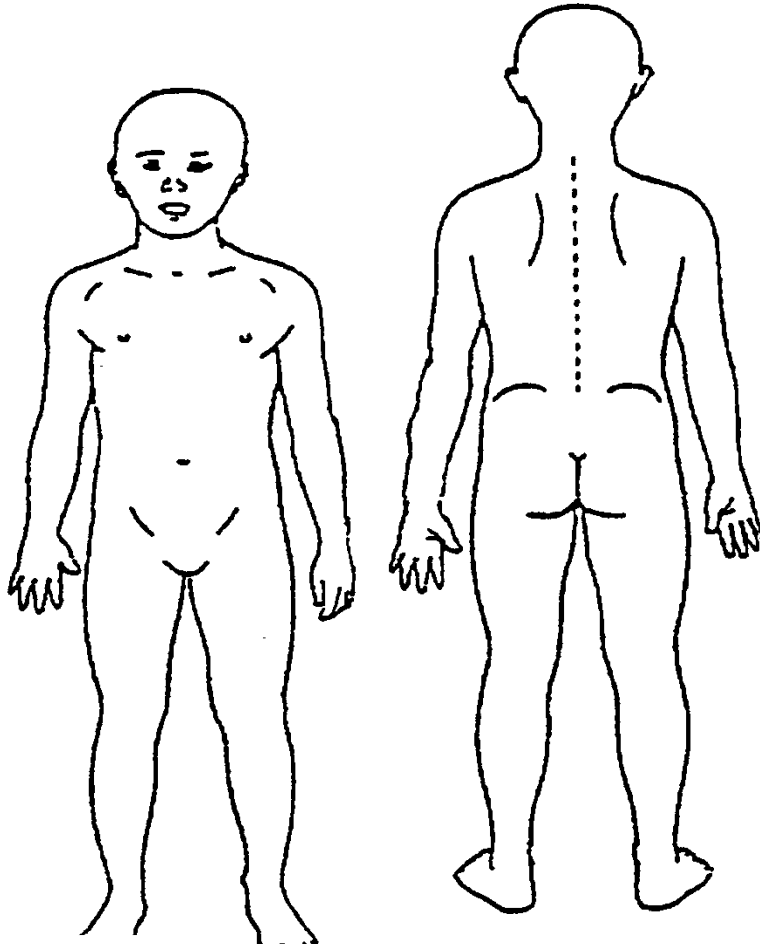
If you are concerned about a pupil in school, please inform the Designated Safeguarding Person (Liz Wise, Karen Meeson or Norma Alexanders) preferably via CPOMS. However, if necessary, please complete this form, which will be used to record the concern and any action taken.

You may have concerns following a disclosure of information from the child or from a third party. Please advise on CPOMS or complete this form as soon as possible after the disclosure and hand to the DSL in person. If physical injury might be involved please also complete the body map on CPOMS or below. Make a note of the date when this information was passed on and to whom.

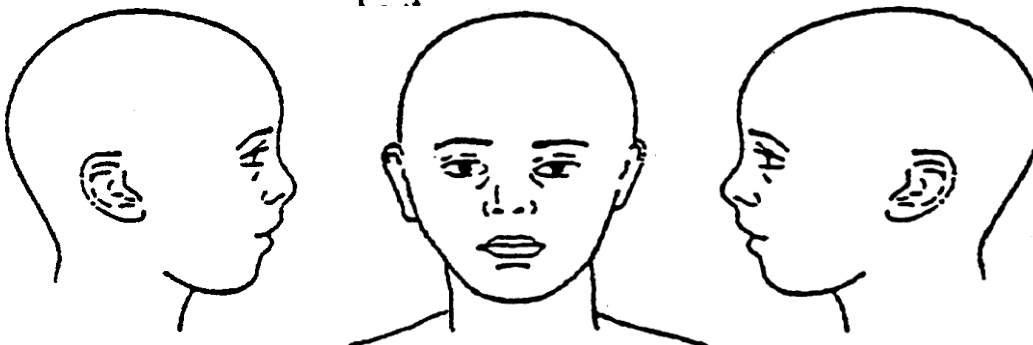
Full Name of Child and form		DOB:
Time of concern:	Date of concern:	Place of concern:
Concern:		
<p>Detailed Account: (if necessary complete additional sheets)</p> <p>(Please do not interpret what is seen or heard; simply record the facts. After completing the form, pass it immediately to the Designated Safeguarding Person.)</p>		
Member of Staff completing form		Role / Title

Body Map

Child's Full Name	DOB	Date



Electronic Version:
Click and move the red dot to indicate where the injury is located on the body/face.



Description of injury / additional notes:		
Professionals Name	Professionals Designation	Contact Number

Designated Person Check List

Last full review by Mrs E Wise on 2 September 2019 and ratified by the Board on 14 November 2019

Possible Action	By Whom	Outcome
Discuss with child		
Contact parents		
Check records in school		
Discuss with relevant professionals		
Check with schools who have siblings		
Seek advice from LA		
Monitor and review		
Consider a CAF		
Consult with Social Care		
Contact Police 101: Non emergency 999: Immediate Danger		
Other (please specify)		
Assessment of Risk		
Safeguarding	Risk of Harm	Immediate Danger

Vulnerability

Alongside the specific safeguarding issues listed below staff should consider children who may be particularly vulnerable to abuse and may require early help:

Factors that can increase vulnerabilities can include:

- any children with additional needs including;
- children with Special Educational Needs / Disabled children (SEND)

- children facing housing issues such as frequent moves and homelessness
- those living in families with chaotic lifestyles
- families with increased stress, parental mental health and/or drug and alcohol dependency
- those children living elsewhere, with friends, relatives, are in care or are leaving care
- Asylum Seekers / Refugees
- Those vulnerable to discrimination on the basis of their sexuality, race, religion, ethnicity or disability
- Children at risk from neglect or abuse including specific issues such as FGM, CSE, forced marriage, radicalisation and living in households with domestic abuse
- Children with communication difficulties
- Children without adequate parenting / supervision which could lead to abuse, risk-related behaviour and sexual exploitation.

This is not an exhaustive list but merely an example of vulnerabilities that staff must consider when identifying safeguarding concerns.

For more information on specific safeguarding issues please refer to Part 1 & annex A of Keeping Children Safe in Education
Sept, 2019